



# excalibur<sup>®</sup>

**The reciprocating file that  
will conquer the world**

Featuring a state-of-the-art  
gold alloy treatment



## Technology tested by top professionals



**José Aranguren**

These are reciprocating files that offer the lowest taper, flexibility and cutting capacity in a single instrument. They are amazing.



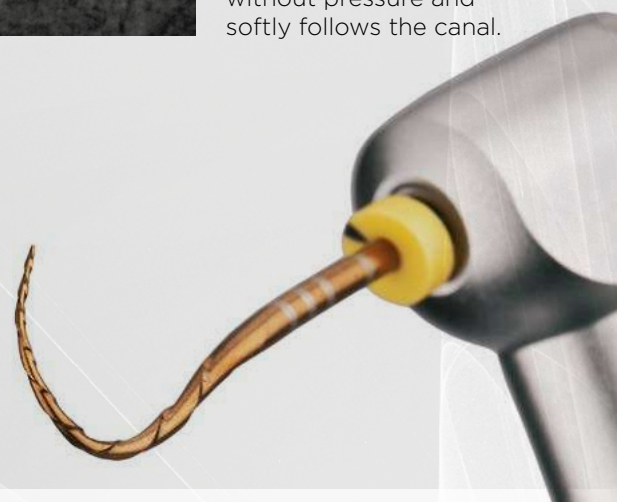
**Arman Gazi**

These files complete the wide range of Zarc products. It goes without pressure and softly follows the canal.



**José Conde**

Speed, safety, conservation and flexibility come together in a single system: Excalibur®.



## A FILE FOR ALL TYPES OF CANALS

	TAPER	Ø
<b>SMALL</b>	5%	0,20
<b>REGULAR</b>	5%	0,25
<b>MEDIUM</b>	5%	0,35
<b>LARGE</b>	5%	0,45

## excalibur®

The Excalibur® family is made up of 4 instruments so specialists can choose the one that best suits their clinical needs:

**20/05, 25/05, 35/05 and 45/05**

## excalibur Glider®

Excalibur Glider® available, also with reciprocating movement.

TAPER

4%

Ø

0,12



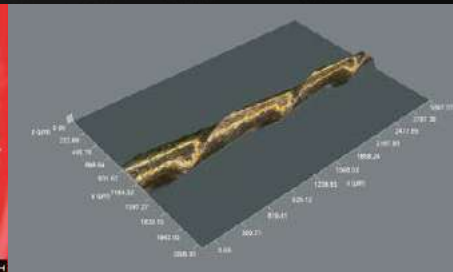
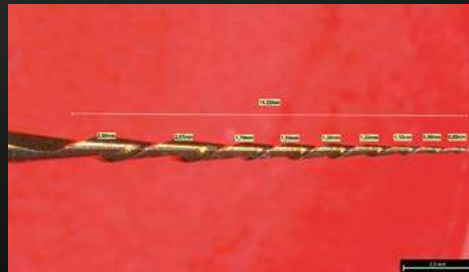
# excalibur®



Lower MFD

## The reciprocating file with the lowest taper

With just a **5% taper**, Excalibur® is the first conservative single-file reciprocating system. It is capable of removing less dentin than its competitors, ensuring **greater preservation of the original anatomy**.

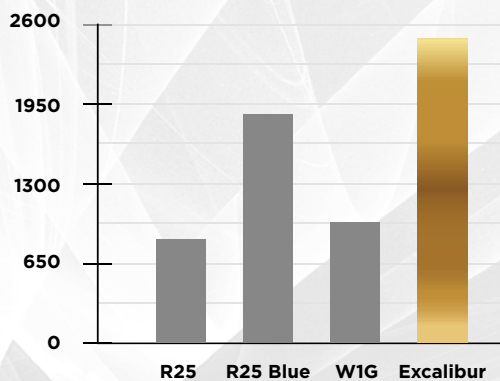


## SUPERB SIMPLICITY LEADING TO ENDODONTIC EXCELLENCE

# excalibur®

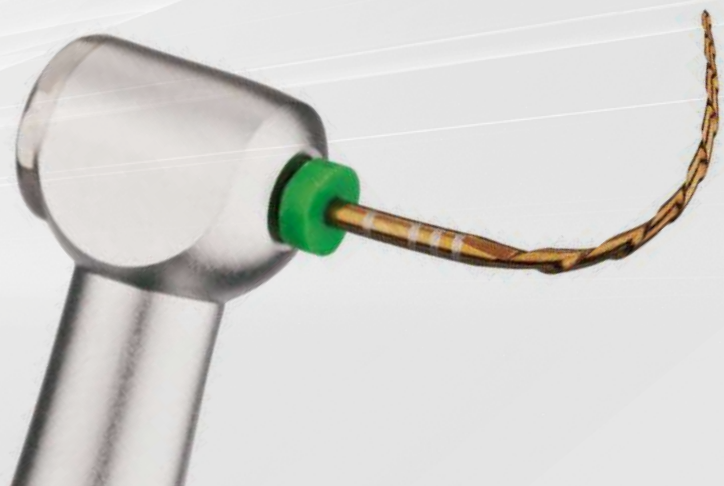
### Greater resistance to cyclic fatigue

Excalibur® offers **32%\* higher** cyclic fatigue resistance than any other system on the market. It is by far **the most resistant** ever tested.



NCF (Number of cycles to fracture)

\*Data on file (Rey Juan Carlos University, Madrid, Spain)  
R25, R25Blue and WIG are not registered trademarks of Zarc4Endo



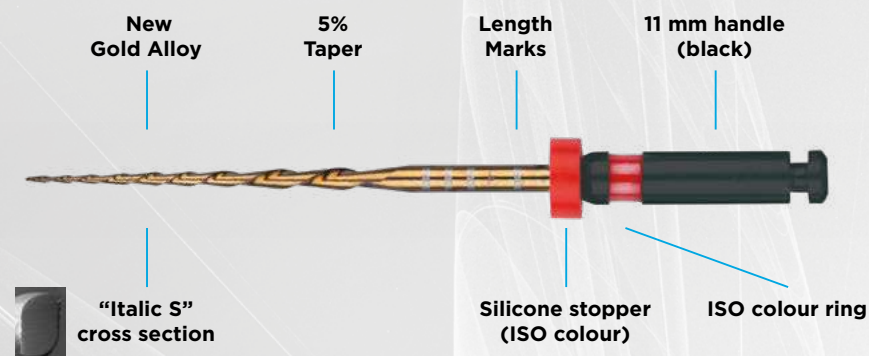


# excalibur®

## Technical characteristics of Excalibur®

**400-500 RPM**

**150° anticlockwise rotation/30° clockwise rotation**



- Excalibur®, which features a state-of-the-art **gold alloy**, is characterized by its **extraordinary flexibility and shape memory control**.
- It is the fastest, simplest, most resistant, effective and versatile system ever invented. It has the **best cutting performance** on the market.\*
- A single-file system **capable of doing it all**, and doing it well.
- The **most conservative and safest** reciprocating system.\*

\*Data on file

## System Reference Codes

### Excalibur Glider®

**ZGE211502** 21 mm (3 units) sterile  
**ZGE251502** 25 mm (3 units) sterile  
**ZGE311502** 31 mm (3 units) sterile

### Excalibur® 21 mm

**ZRE2102005** E20 21 mm (6 units) sterile  
**ZRE2102505** E25 21 mm (6 units) sterile  
**ZRE2103505** E35 21 mm (6 units) sterile  
**ZRE2104505** E45 21 mm (6 units) sterile  
**ZRE21ASST1** E20-E45 21 mm (4 units) sterile

### Excalibur® 25 mm

**ZRE2502005** E20 25 mm (6 units) sterile  
**ZRE2502505** E25 25 mm (6 units) sterile  
**ZRE2503505** E35 25 mm (6 units) sterile  
**ZRE2504505** E45 25 mm (6 units) sterile  
**ZRE25ASST1** E20-E45 25 mm (4 units) sterile

### Excalibur® 31 mm

**ZRE3102005** E20 31 mm (6 units) sterile  
**ZRE3102505** E25 31 mm (6 units) sterile  
**ZRE3103505** E35 31 mm (6 units) sterile  
**ZRE3104505** E45 31 mm (6 units) sterile  
**ZRE31ASST1** E20-E45 31 mm (4 units) sterile

### Excalibur® Gutta-percha

**GP-320** Gutta-percha E20 (60 units)  
**GP-325** Gutta-percha E25 (60 units)  
**GP-335** Gutta-percha E35 (60 units)  
**GP-345** Gutta-percha E45 (60 units)

### Excalibur® sterile paper points

**SCPP-320** Paper points E20 (180 units)  
**SCPP-325** Paper points E25 (180 units)  
**SCPP-335** Paper points E35 (180 units)  
**SCPP-345** Paper points E45 (180 units)

[hola@zarc4endo.com](mailto:hola@zarc4endo.com)  
[www.zarc4endo.com](http://www.zarc4endo.com)



**ZARC**