

# Apical Shaper<sup>®</sup>

**MORE APICAL PREPARATION  
WITH MAXIMUM FLEXIBILITY**

COMPLEMENTARY TO ANY  
SYSTEM ON THE MARKET



**ApicalShaper® is compatible with  
all file systems on the market**

✓ **BlueShaper®**

✓ **excalibur®**

✓ **SlimShaper®**

**Also compatible with:**

Reciproc Blue\* by VDW

Waveone Gold\* by Maillefer

Protaper Gold\* by Maillefer

etc...



\* Reciproc Blue, Waveone Gold and Protaper Gold  
are not trademarks of Zarc4Endo.

## GREATER **BACTERIAL REDUCTION** MAINTAIN

Apical finishing file with only 3% taper for  
greater preservation of pericervical dentin



**MAXIMUM FLEXIBILITY**



**GREAT CUTTING EFFICIENCY**



**FOUR APICAL PREPARATION OPTIONS:**  
30, 35, 40 AND 50



**MAXIMUM SECURITY**

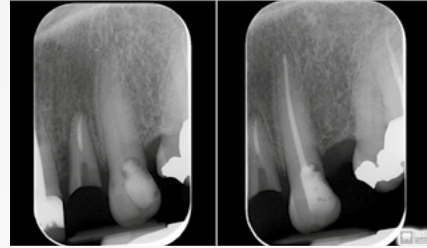


# Apical Shaper®



**José Aranguren**

ApicalShaper® allows greater cleaning and shaping at the apical level without sacrificing pericervical dentin. We can make very conservative preparations with great cleaning of the canal.



**Stéphane Simon**

ApicalShaper® is a very useful, simple to use file for shaping large foramen. Its flexibility is incredible.



**Valter Fernandes**

What I like most of this system is the possibility of being conservative in pericervical dentin without compromising apical disinfection.



## MAINTAINING THE ORIGINAL SHAPE OF THE CANAL

### Apical Shaper®

The ApicalShaper® family has 4 instruments so that the specialist can choose the one that best suits their clinical needs:

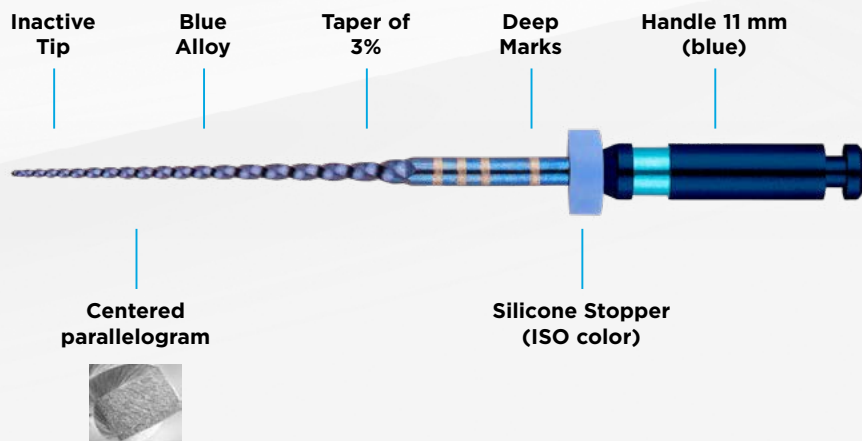
**30/03, 35/03, 40/03 and 50/03**

		TAPER	Ø
30		3%	0,30
35		3%	0,35
40		3%	0,40
50		3%	0,50

# Apical Shaper®

## Technical characteristics

### 400-500 RPM, TORQUE 4



- The Blue alloy provides **maximum flexibility** and **resistance to cyclic fatigue**.
- The centered parallelogram section provides a high **cutting capacity** and **great flexibility**.

## System Reference Codes

### ApicalShaper® 21 mm

**ZAS2103003** Z30 21 mm (6 units) sterile  
**ZAS2103503** Z35 21 mm (6 units) sterile  
**ZAS2104003** Z40 21 mm (6 units) sterile  
**ZAS2105003** Z50 21 mm (6 units) sterile  
**ZAS21ASST1** Z30-Z50 21 mm (4 units) sterile

### Gutta-percha

**GP-430** Gutta-percha Z30 (60 units)  
**GP-435** Gutta-percha Z35 (60 units)  
**GP-440** Gutta-percha Z40 (60 units)  
**GP-450** Gutta-percha Z50 (60 units)

### ApicalShaper® 25 mm

**ZAS2503003** Z30 25 mm (6 units) sterile  
**ZAS2503503** Z35 25 mm (6 units) sterile  
**ZAS2504003** Z40 25 mm (6 units) sterile  
**ZAS2505003** Z50 25 mm (6 units) sterile  
**ZAS25ASST1** Z30-Z50 25 mm (4 units) sterile

### Sterile paper points

**SCPP-430** Sterile paper points Z30 (180 units)  
**SCPP-435** Sterile paper points Z35 (180 units)  
**SCPP-440** Sterile paper points Z40 (180 units)  
**SCPP-450** Sterile paper points Z50 (180 units)

### ApicalShaper® 31 mm

**ZAS3103003** Z30 31 mm (6 units) sterile  
**ZAS3103503** Z35 31 mm (6 units) sterile  
**ZAS3104003** Z40 31 mm (6 units) sterile  
**ZAS3105003** Z50 31 mm (6 units) sterile  
**ZAS31ASST1** Z30-Z50 31 mm (4 units) sterile

[hola@zarc4endo.com](mailto:hola@zarc4endo.com)  
[www.zarc4endo.com](http://www.zarc4endo.com)



**ZARC**