

BlueShaper[®]

**First multialloy system
in the world**

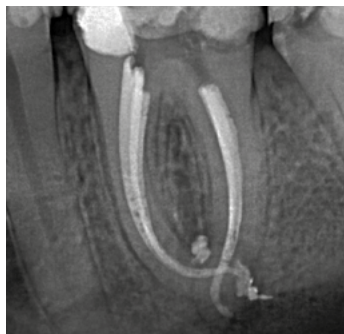
Designed in Spain



Pink + Blue

Two alloys in
one system

Guaranteed performance in all cases



Arman Gazi

Flexible instruments that allow the most complex anatomies to be treated in complete safety.



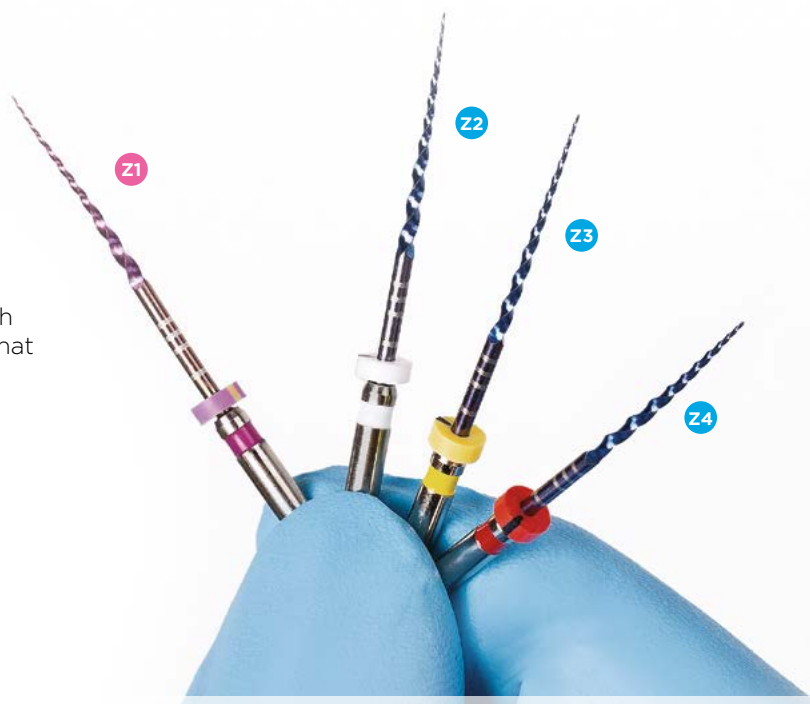
José Conde

The BlueShaper® system provides us with security, versatility, and efficiency in simple as well as complex cases, and the most important thing is that it ensures a predictable and successful treatment for our patients.



Carlos Franco

Flexible instruments with good cutting capacity that allow for quick and safe canal preparation.



The double alloy of BlueShaper® brings predictable performance as developed by odontologists to odontologists.

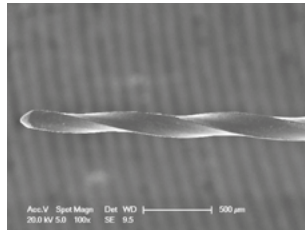
We know there are impossible curvatures. BlueShaper® offers confidence, speed and safety in all situations.

BlueShaper®

**The efficiency
of the new alloy**

Combined with the highest flexibility

BlueShaper®, more efficiently and smoothly, creates the tapered shape of the canal, bringing new advantages: highest flexibility and cyclic fatigue resistance, with a complete files system, without changing work dynamics.



Rey Juan Carlos University, Madrid.

Its convex section and progressive taper improves the cutting efficacy, minimizing the friction between the file and dentin.

BlueShaper® Highest flexibility on demand

		TAPER	
Z1		2-10%	Ø 0,14
Z2		2-10%	Ø 0,17
Z3		5-6%	Ø 0,19
Z4		5-6%	Ø 0,25

BlueShaper®

The BlueShaper® family consists of 8 instruments so that the specialist can choose the sequence that best suits each clinical case:

Basic sequence:

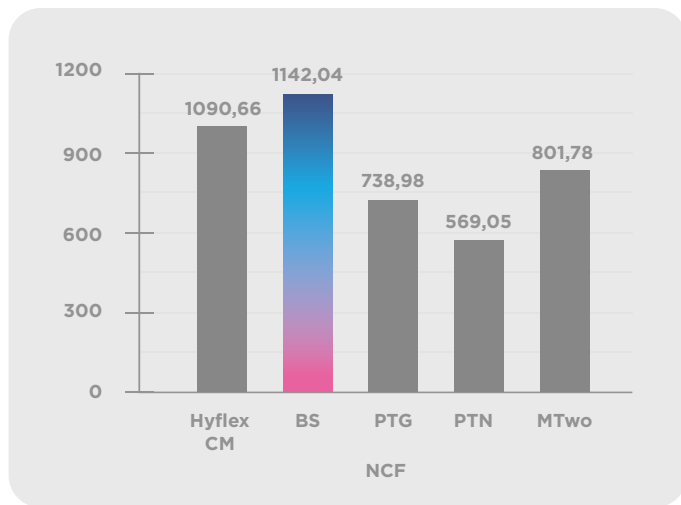
Z1, Z2, Z3 y Z4

Complete sequence:

ZX, Z1, Z2, Z3, Z4, Z5, Z6 y Z7

Also available separately:

ZX, Z1, Z2, Z3, Z4, Z5, Z6 y Z7



Data on file

Highest resistance to the cyclic fatigue

BlueShaper® brings a higher cyclic fatigue resistance than other well known systems, what represents a fundamental advantage, as the cyclic fatigue is the responsible of the file separation.



Unique system with double alloy



Great torsional resistance



Reduced cyclic fatigue



Maximized flexibility

Packaging information

BlueShaper® ZX 19 mm

ZBS19000ZX ZX 19 mm (6 units) sterile

BlueShaper® 21 mm

ZBS21Z0001 Z1 21 mm (6 units) sterile
ZBS21Z0002 Z2 21 mm (6 units) sterile
ZBS21Z0003 Z3 21 mm (6 units) sterile
ZBS21Z0004 Z4 21 mm (6 units) sterile
ZBS21Z0005 Z5 21 mm (6 units) sterile
ZBS21Z0006 Z6 21 mm (6 units) sterile
ZBS21Z0007 Z7 21 mm (6 units) sterile
ZBS21ASST6 ZX-Z5 21 mm (6 units) sterile
ZBS21ASST4 Z1-Z4 21 mm (4 units) sterile

BlueShaper® 25 mm

ZBS25Z0001 Z1 25 mm (6 uds.) estériles
ZBS25Z0002 Z2 25 mm (6 uds.) estériles
ZBS25Z0003 Z3 25 mm (6 uds.) estériles
ZBS25Z0004 Z4 25 mm (6 uds.) estériles
ZBS25Z0005 Z5 25 mm (6 uds.) estériles
ZBS25Z0006 Z6 25 mm (6 uds.) estériles
ZBS25Z0007 Z7 25 mm (6 uds.) estériles
ZBS25ASST6 ZX-Z5 25 mm (6 uds.) estériles
ZBS25ASST4 Z1-Z4 25 mm (4 uds.) estériles

BlueShaper® 31 mm

ZBS31Z0001 Z1 31 mm (6 uds.) estériles
ZBS31Z0002 Z2 31 mm (6 uds.) estériles
ZBS31Z0003 Z3 31 mm (6 uds.) estériles
ZBS31Z0004 Z4 31 mm (6 uds.) estériles
ZBS31Z0005 Z5 31 mm (6 uds.) estériles
ZBS31Z0006 Z6 31 mm (6 uds.) estériles
ZBS31Z0007 Z7 31 mm (6 uds.) estériles
ZBS31ASST6 ZX-Z5 31 mm (6 uds.) estériles
ZBS31ASST4 Z1-Z4 31 mm (4 uds.) estériles

BlueShaper® Gutta-percha

GP-144 Gutta-percha Z3 (60 units)
GP-145 Gutta-percha Z4 (60 units)
GP-146 Gutta-percha Z5 (60 units)
GP-147 Gutta-percha Z6 (60 units)
GP-148 Gutta-percha Z7 (60 units)

BlueShaper® Sterile paper points

SCPP-144 Sterile paper points Z3 (180 units)
SCPP-145 Sterile paper points Z4 (180 units)
SCPP-146 Sterile paper points Z5 (180 units)
SCPP-147 Sterile paper points Z6 (180 units)
SCPP-148 Sterile paper points Z7 (180 units)

hola@zarc4endo.com
www.zarc4endo.com



ZARC